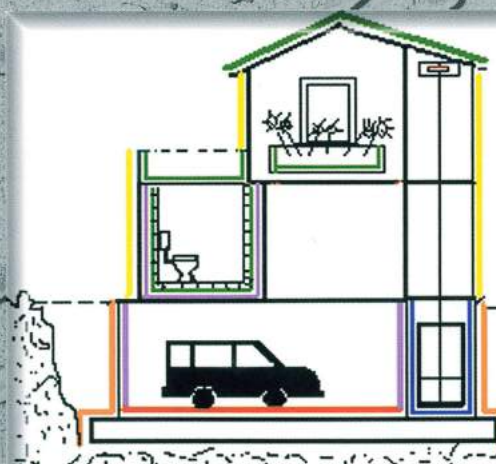


# Enter the impressive world of the waterproofing cementitious mortars

**SATECMA**



- Tecmadry
- Tecmadry Elast
- Tecmadry RPA / F / Elast
- Tecmadry Milenium
- Tecmadry Cimentaciones
- Tecmadry F





# integral solutions against water leaks problems

1. Plug water leaks with **PROQUICK**
2. Repair the damaged or weak areas with **PREMHOR** family mortars
3. Waterproof with **TECMADRY** family mortars

## ADVANTAGES OF OUR WATERPROOFING CEMENTITIOUS PRODUCTS COMPARED TO OTHER SYSTEMS

1. CONTINUOUS SYSTEM WITHOUT JOINTS
2. WITHSTAND HIGH PRESSURES OF WATER (POSITIVE AND NEGATIVE)
3. CAN BE APPLIED ON DAMP SURFACES
4. DO NOT AGE, WITHSTAND UV RAYS
5. DECORATIVE
6. EASY TO APPLY
7. ECONOMIC
8. DIFFERENT PRODUCTS FOR EACH PARTICULAR PROBLEM
  - 8.1. RIGID, FLEXIBLE AND ELASTIC
  - 8.2. THIN COAT, THICK COAT (LEVELLING), PENETRATING

## REPAIR MORTARS

### PROQUICK

Instant setting mortar for sealing water leaks even with pressure.

- Instantly stops water leaks.
- No retraction, expands while setting
- Sets quickly in about 1 to 3 minutes
- Sets under water
- Lasts as much as the structure

**Easy to apply, not special equipment required**

### PREMHOR AND PREMHOR-R



**No retraction mortars with quick setting, which has been designed for repairing and restoring concrete.**

Due to its special formulation, the repairs made with **PREMHOR** and **PREMHOR-R** are waterproofing.

**PREMHOR** due to its good mechanical resistances and durability is absolutely necessary when repairing and restoring concrete in:

- Patching and holes
- Cornices, splays, concrete sills
- Reinforcement in walls
- Cracks repairs
- Filling skirtings

**PREMHOR R** due to its quick setting and hardening is absolutely necessary in mortar repairing and restoration in winter. **PREMHOR R** is also recommended for quick fixings where quick setting and hardening is needed.

### PREMHOR GROUT

No retraction cement mortar with great fluidity and levelling capacity, as well as very high mechanical resistances. The product, once hardened, has good water and oil proofing properties. Due to its special formulation, **PREMHOR GROUT** is suitable for fillings and fixings where high mechanical conditions are needed. Due to its high mechanical resistance and excellent fluidity, is necessary to be used for:

- Fixings: machinery, bolts, crane rails, gantry cranes, concrete posts, pillars in pre-cast constructions, etc
- Bridges supports
- Fillings in machine beds, holes, etc
- Repairs in holes in concrete structures
- Reinforcement in concrete structures

## WATERPROOFING MORTARS

### TECMADRY/ TECMADRY MILENIUM

**TECMADRY/TECMADRY MILENIUM** serial waterproof products are permeable crystalline waterproof materials produced by combining particular cement and a variety of active chemicals. Their special disposition enables them to penetrate into concrete and seal off the cracks and pores there with crystals generated through their reaction with water, thus increasing the concrete compactness and making it completely waterproof.

#### Usable Range:

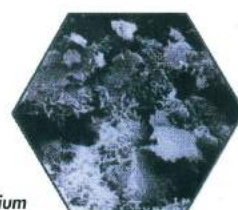
- Can be used to protect outer-walls against water
- Can be used for wall spaces bearing positive and negative pressures of water and for those in basement or under water level
- Can be used as waterproof and anti-corrosion base materials
- Can be used as waterproof materials for brick walls and blocks
- Can be used as waterproof materials and decorating materials for chemical plants, silos and cooling towers
- Can be used as waterproof and restoration materials for irrigation canals
- Can be used as waterproof materials for dams and watertight walls
- Can be used in water treatment plants for waterproofing
- Can be used as waterproof materials in swimming pools and reservoirs
- Can be used as waterproof materials in drinking water ponds
- Can be used as waterproof materials in base walls and floors
- Can be used as waterproof materials in lift wells and water-accumulating wells
- Can be used as waterproof materials in grain depots and food depots
- Can be used as waterproof materials in cable trenches and tunnels
- Can be used as waterproof materials in kitchens, washrooms and bathrooms
- Can be used as waterproof materials in ports and wharfs



**Application of Tecmadry Milenium**



**Crystals of Tecmadry Milenium**





### Merits:

- Can form a particular protective layer by filtering into wall surfaces and plugging all tiny pores in them.
- Can be used in water faces and land faces.
- Can be painted on damp surfaces.
- Easy operation. No maintenance costs needed afterward.
- Can be applied on rough faces instead of planes, thus saving processes and costs
- Solid surface with no need of protective layer and refillable when used for outer walls of basements.
- Can self-repair and seal tiny cracks.
- Ageing resistant, as long-lived as the structure.
- Can bear high and low temperature, antifreeze and anti-thaw.
- Can protect reinforcing steel against corrosion.
- When used for interior walls, especially as waterproof materials in basements, the product can resist high water pressure.
- Free of damage caused by air pollution or erosion of ketoglutarate and alkaliescence
- Innocuous and harmless in direct touch with drinking water.
- Surfaces painted with them can be directly covered by other paints or cemented by tiles.

Can be used as waterproof and decorating materials in exterior walls of buildings.

### TECMADRY F

Flexible mono-component hydraulic waterproofing material. It is efficient for positive and negative pressures of water. It is recommended to be applied in areas where vibrations are expected:



- Elevator pits
- Tunnels and galleries
- Tanks and pools
- Floor slab edges
- Ponds and fountains
- Grain silos

### TECMADRY ELAST

Cement based elastic coating for high protection and waterproofing. It is a two-component pre-dosed product which is based on special cements and synthetic resins in emulsion. Its high elasticity offers the possibility of bridging the possible cracks (it can bridge upto 3.5 mm. cracks) due to setting, thermal

expansion, etc., keeping the waterproofing and protection of concrete.

**TECMADRY ELAST** is specially recommended when:

- Waterproofing and protecting porous or non porous supports or which could be submitted to movements. Due to its high weather resistance and its great finish, it can be left as it is with no paint on top, achieving the aesthetic and decorative properties of other finishes.
- Protecting or waterproofing civil works: tunnels, irrigation canals, silos, beams and pillars in bridges, dams, water treatment plants, etc.
- Waterproofing and protecting basements and foundations, galleries, walls, etc., always working with direct pressure.
- Waterproofing and protecting salt water tanks.
- Protecting structural concrete against carbonation, due to its high resistance to carbon dioxide diffusion.
- Protecting structural concrete against corrosion due to chloride attack, specially in aggressive environments (coastal areas, etc.) due to its high



resistance to chloride penetration.

- Protecting concrete against aggressive environments: sulphated waters, salt water, polluted environments, etc., due to its high tightness to pollutant gases and ions.
- Protecting concrete against freeze/thaw cycles.
- Waterproofing and protecting roof decks (damp or dry), reinforced with fiber mesh.

### TECMADRY CIMENTACIONES

Waterproofing cementitious mortar recommended when waterproofing foundations underground, under water level, as well as for preventing filtrations of water coming from the surface. It can also be used as barrier against capillarity ascending dampness in the different units.



### TECMADRY RPA

Waterproofing coating for Leveling, Protection and Finishing, to be applied with 2-5 mm thickness only with trowel. Good bonding properties.

It is specially recommended:

- As waterproofing and protecting coating on façades which have been made with polystyrene foam panels
- For the different waterproofing and protecting jobs on façades
- For levelling, waterproofing and protection jobs in Public Works: tunnels, irrigation canals, silos, beams in bridges, dams, water treatment plants, etc
- Waterproofing or protection in basements and foundations, galleries, walls, etc
- As a levelling coating (small cracks, cavities, etc.) before applying the waterproofing mortars **TECMADRY**, **TECMADRY MILENIUM**, **TECMADRY F**, **TECMADRY ELAST**
- As a protection coating against abrasion and wearing after applying the waterproofing mortars **TECMADRY**, **TECMADRY F**, **TECMADRY MILENIUM** or **TECMADRY ELAST**
- As a finish coating after applying the waterproofing mortars **TECMADRY**, **TECMADRY MILENIUM**, **TECMADRY F** or **TECMADRY ELAST** (i.e. for swimming pools which are going to be painted afterwards)
- In order to get a smooth finish

### CRYLADIT

It is an admixture for mixing **TECMADRY** or other cementitious mortars.

Merits:

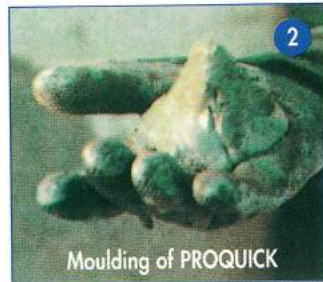
- Improves the external appearance of the mortar
- Increases surface hardness of mortar
- Increases mortar bonding on little porous surfaces



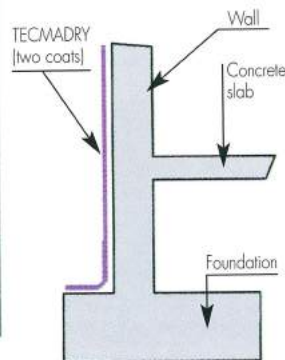


# detailed construction solutions

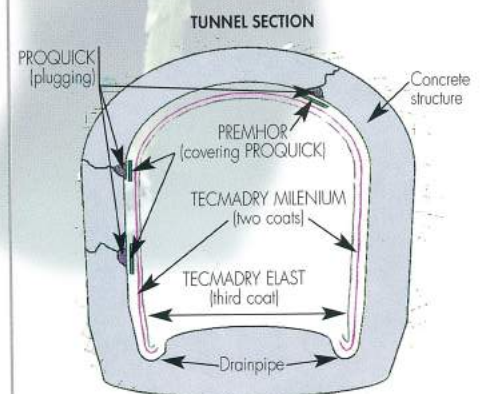
## WATER LEAKS PLUGGING WITH PROQUICK



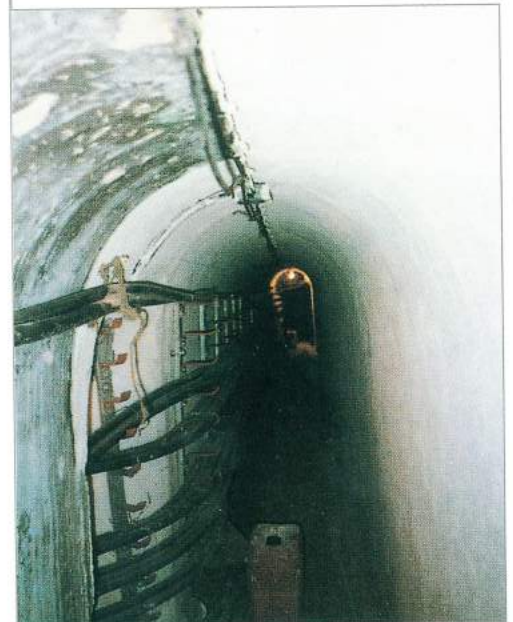
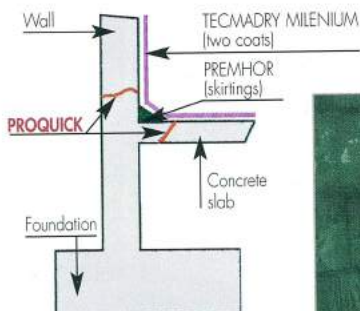
### 1. EXTERNAL WALL OF BASEMENT



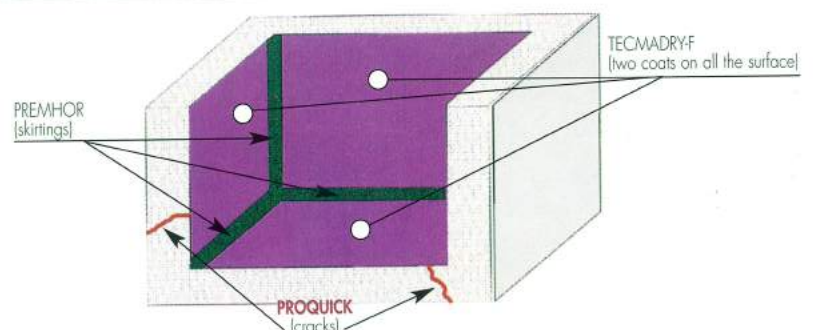
### 4. TUNNELS



### 2. INTERNAL WALL OF BASEMENT



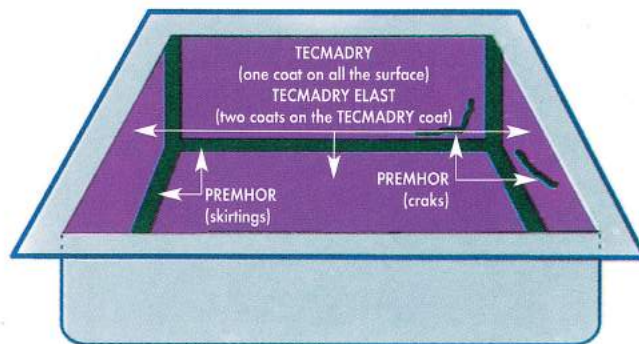
### 3. ELEVATOR SHAFT



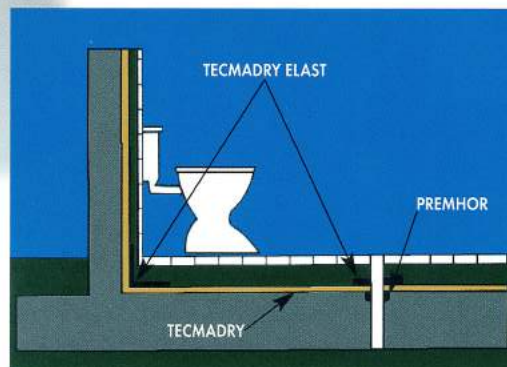


# detailed construction solutions

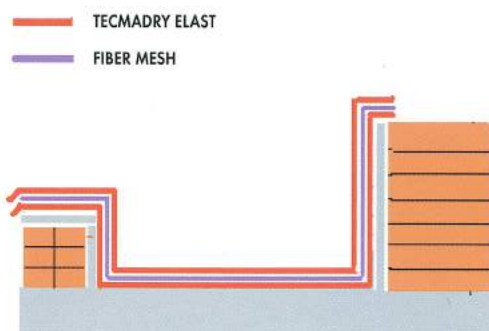
## 5. PONDS AND POOLS



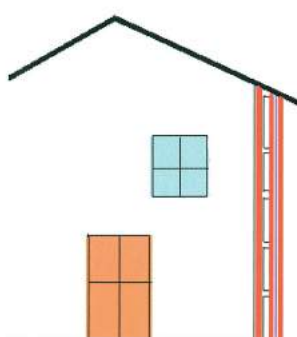
## 6. TOILETS/KITCHENS



## 7. ROOF DECKS



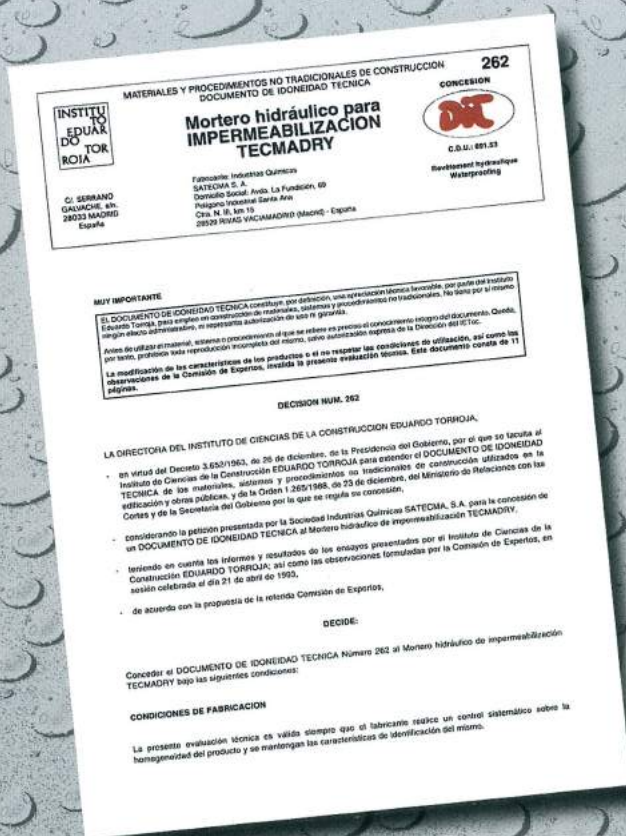
## 8. FAÇADES THERMALLY INSULATED WITH POLYSTYRENE PANELS



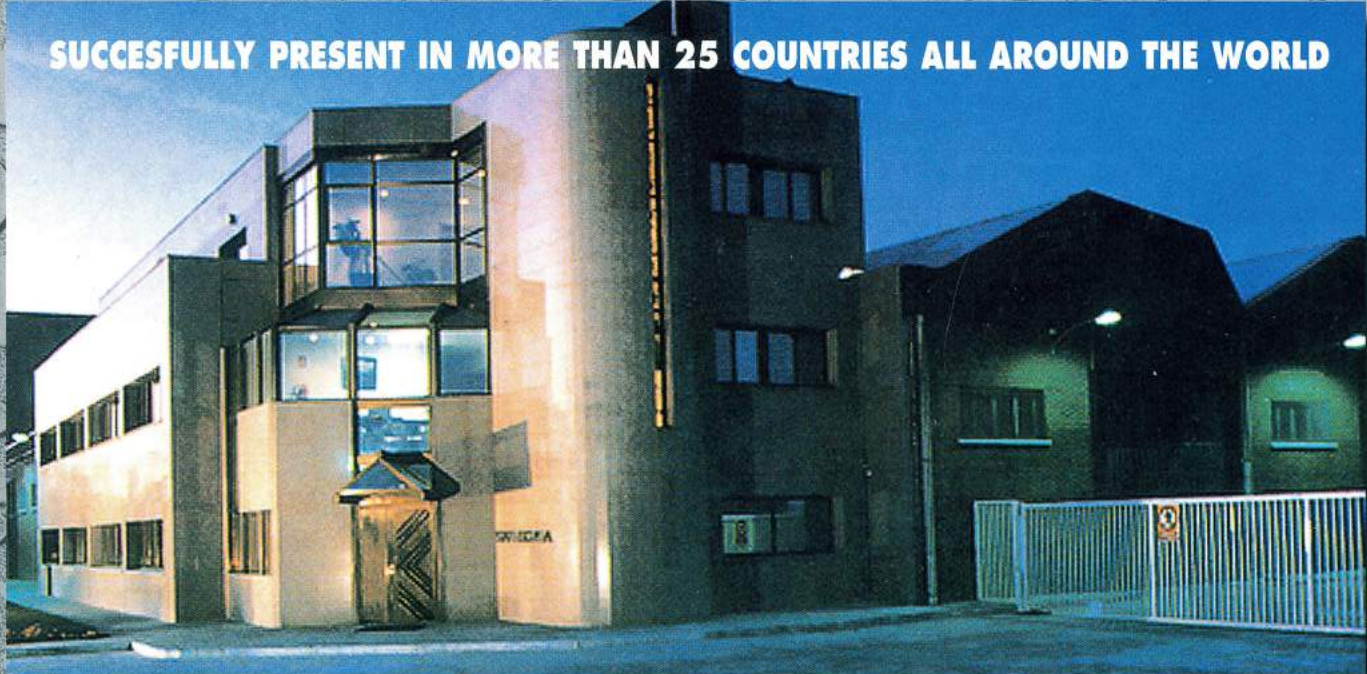
TECMADRY RPA  
POLYSTYRENE PANEL  
GLASS FIBER MESH







**SINCE 1976**



**HEADQUARTER:**

c/ La Fundición, 69 - Polígono Industrial Santa Ana - Rivas Vaciamadrid - 28522 Madrid (SPAIN)  
Tel.: +34 91 666 47 11 - Fax: +34 91 666 43 11 - e-mail: correo@satecma.es - http://www.satecma.es