

From 1976 to  
the future

# ENTER THE IMPRESSIVE WORLD OF THE WATERPROOFING CEMENTITIOUS MORTARS

# INTEGRAL SOLUTIONS AGAINST WATER LEAKS PROBLEMS

1. PLUG WATER LEAKS WITH PROQUICK
2. REPAIRS THE DAMAGED OR WEAK AREAS WITH PREMHOR FAMILY MORTARS
3. WATERPROOF WITH TECMADRY FAMILY MORTARS

## ADVANTAGES OF OUR WATERPROOFING CEMENTITIOUS PRODUCTS COMPARED TO OTHER SYSTEMS

- 1 CONTINUOUS SYSTEM WITHOUT JOINTS
- 2 WITHSTAND HIGH PRESSURES OF WATER (POSITIVE AND NEGATIVE)
- 3 CAN BE APPLIED ON DAMP SURFACES
- 4 DO NOT AGE, WITHSTANDS UV RAYS
- 5 DECORATIVE
- 6 EASY TO APPLY
- 7 ECONOMIC
- 8 DIFFERENT PRODUCTS FOR EACH PARTICULAR PROBLEM
  - 8.1 RIGID, FLEXIBLE AND ELASTIC
  - 8.2 THIN COAT, THICK COAT (LEVELLING), PENETRATING, CRYSTALLINE TECHNOLOGY

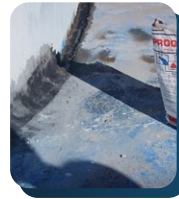
## PLUG WATER LEAKS

### PROQUICK/PROQUICK PLUS

**Instant setting mortar for sealing leaks even with pressure.**

- Instantly stops water leaks.
- No retraction, expands while setting.
- Sets quickly in about 1 to 3 minutes.
- Sets under water.
- Lasts as much as the structure

Easy to apply, not special equipment required



## REPAIR MORTARS

### PREMHOR STREET

**Quick setting and hardening, polymer-modified, non-shrink, cement-based pasty mortar, specially designed for sealing and anchoring** street furniture and drains, as well as repairs which require a rapid return to service. Suitable for both, indoor and outdoor applications.

**It achieves very high mechanical resistance in a short time.**



### PREMHOR COSMÉTICO

No retraction mortar, based on polymer modified cement, which is especially **designed to carry out thin coat cosmetic repairs** (up to 5 mm) on concrete and mortar supports, both inside and outside, supplying an unbeatable aesthetic finish. Thixotropic consistency.



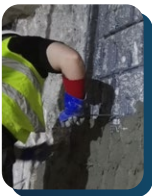
### PREMHOR AND PREMHOR-R

**No retraction mortars with quick setting, which has been designed for repairing and restoring concrete.**

Due to its special formulation, the repairs made with **PREMHOR** and **PREMHOR-R** are waterproofing.

**PREMHOR R** due to its quick setting and hardening is absolutely necessary in mortar repairing and restoration in winter.

**PREMHOR R** is also recommended for quick fixings where quick setting and hardening is needed.



### PREMHOR GROUT

**No retraction grout cement mortar with great fluidity and levelling capacity**, as well as very high mechanical resistance in a short time.

The product, once hardened, has good water and oil proofing properties.

Due to its special formulation, **PREMHOR GROUT** is suitable for fillings and fixings where high mechanical conditions are needed.

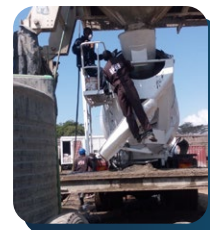
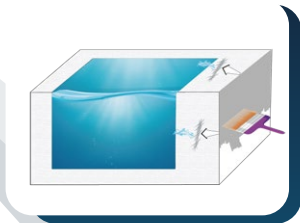


# WATERPROOFING MORTARS

## 1) CRYSTALLINE TECHNOLOGY

### TECMADRY MILENIUM

It is a **cement mortar slurry** that contains a variety of active chemicals. Their special disposition, in the presence of water, enables them to **penetrate** into concrete and seal off the cracks and pores there with **crystals generated** through their reaction with water and free lime, thus increasing the concrete compactness and making it completely waterproof.



### TECMA ADMIX CRYSTAL

It's a **cement-based integral waterproofing admixture** which has been especially designed to improve **watertightness in all the mass of the concrete where it's added**. The active principles in it cause a catalytic reaction inside the concrete, forming a non-soluble **crystalline material** which seals pores and capillaries against the passing of water. This way, the concrete becomes permanently watertight both for and against pressure, improving the protection reinforcement iron bars from corrosion.

## 2) NON CRYSTALLINE TECHNOLOGY

### TECMADRY

**Hydraulic waterproofing cementitious mortar**, that prevents and eliminates damp both above and below ground level. TECMADRY® completely seals the surfaces it is applied to, and prevents water filtration under both negative and positive pressure conditions.



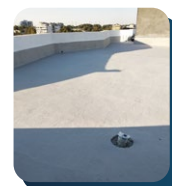
### TECMADRY CIMENTACIONES

**Waterproofing non decorative cementitious mortar** recommended when waterproofing foundations **underground**, under water level, as well as for preventing filtrations of water coming from the surface. It can also be used as barrier against capillarity ascending dampness in the different units. **Economic.**

### TECMADRY ELAST

**Cement based elastic coating for high protection and waterproofing.** It is a two-component pre-dosed product which is based on special cements and synthetic resins in emulsion. Its **high elasticity** offers the possibility of bridging the possible future cracks (it can bridge up to 3.5mm. cracks) due to setting, thermal expansion, etc., keeping the waterproofing and protection of concrete.

- It protects structural concrete against carbonation, due to its high resistance to carbon dioxide diffusion.
- It protects structural concrete against corrosion, due to chloride attack, specially in aggressive environments (coastal areas, etc.) due to its high resistance to chloride penetration.
- It protects concrete against aggressive environments: sulfated waters, salt water, polluted environments, etc., due to its high tightness to pollutant gases and ions.
- It is an excellent option as economic flat roofs and balconies waterproofing.



### TECMADRY F

**Flexible** mono-component hydraulic waterproofing material. It is efficient for positive and negative pressures of water. It is recommended to be applied in areas where vibrations are expected. It is excellent to withstand high negative water pressure without blisters formation.



### TECMADRY SR

Hydraulic cement based waterproofing mortar specially designed for the prevention and elimination of dampness in conditions of high concentration of **sulfates and/or sea water**.



### CRYLADIT

It is a **liquid admixture for mixing TECMADRY or other cementitious mortars**.

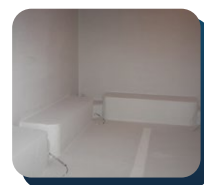
Merits:

- Improves the external appearance of the mortar
- Increases surface hardness of mortar
- Increases mortar bonding on little porous surfaces
- Increases flexibility of the mortar



### TECMADRY TERMIC

**Thermal insulating and waterproofing plaster** based on cement, lightweight aggregates and special additives. It **prevents the formation of water vapour condensation** on walls and ceilings. Due to its high porosity it helps salts coming from negative water pressure to precipitate inside avoiding efflorescence.



### TECMADRY RPA

**Decorative** cement flexible waterproofing plaster in white colour for **Leveling, Protection and Finishing**, to be applied with 2-5 mm thickness only with trowel. Good bonding properties.

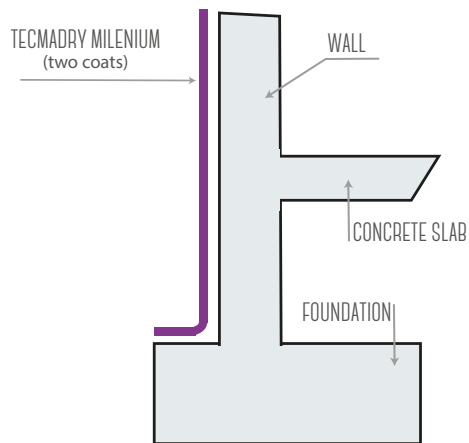


# DETAILED CONSTRUCTION SOLUTIONS

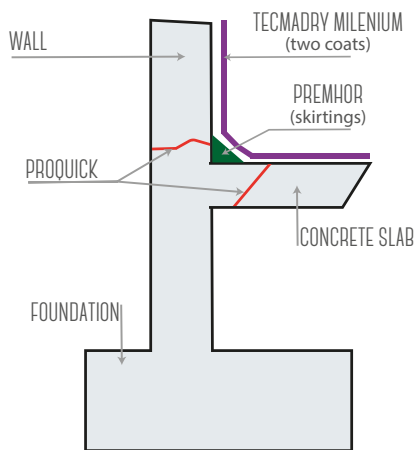
## WATER LEAKS PLUGGING WITH PROQUICK/ PROQUICK PLUS



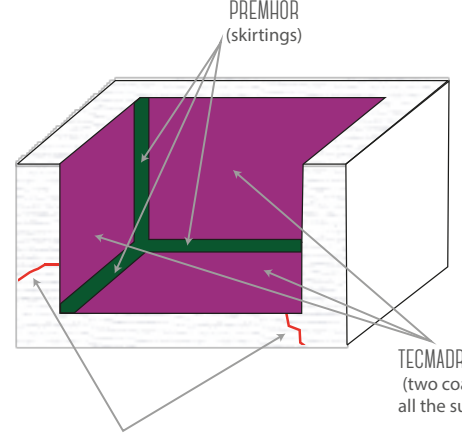
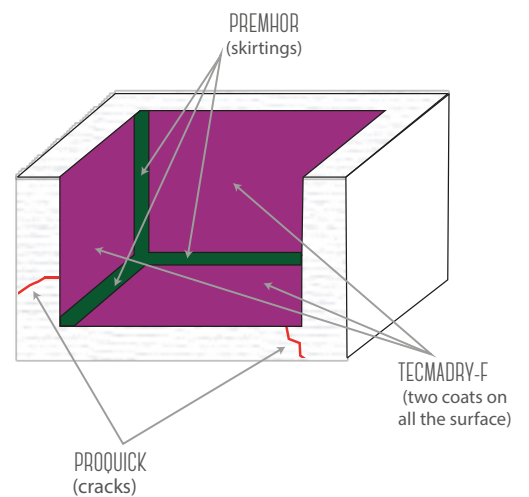
### 1 EXTERNAL WALLS



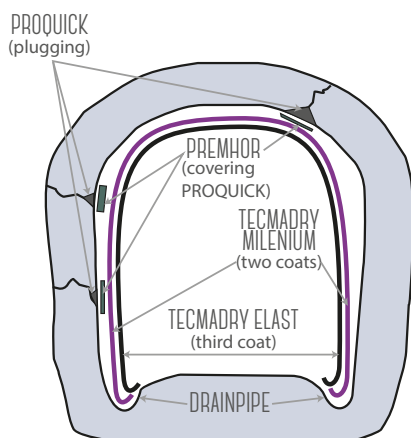
### 2 INTERNAL WALL



### 3 ELEVATOR SHAFT

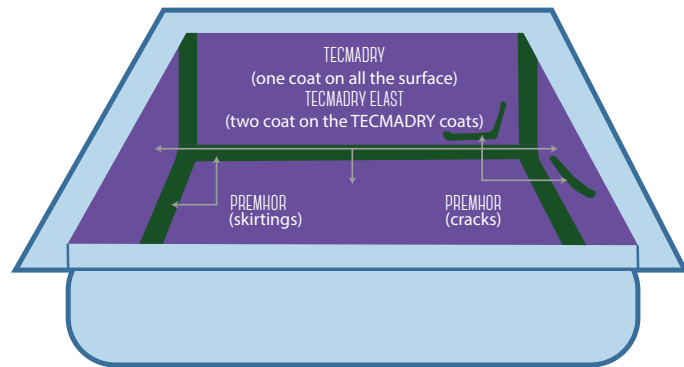
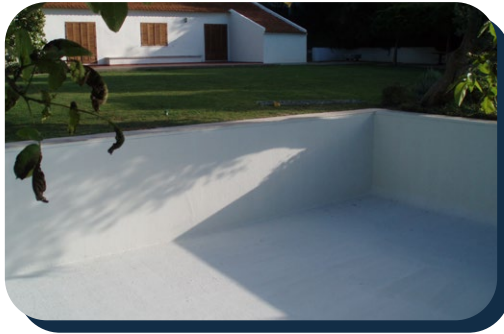


### 4 TUNNELS

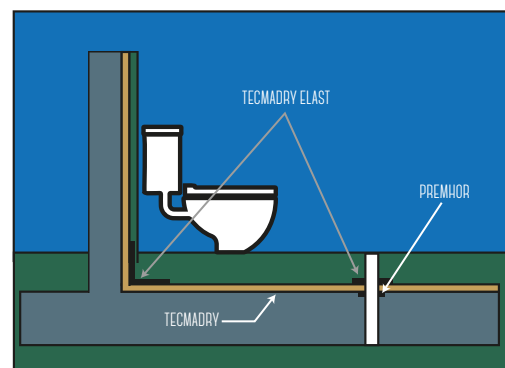
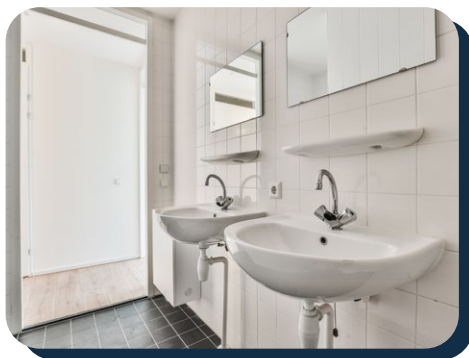


# DETAILED CONSTRUCTION SOLUTIONS

5 Pools



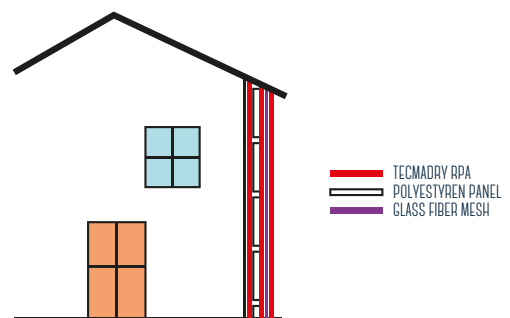
6 TOILETS



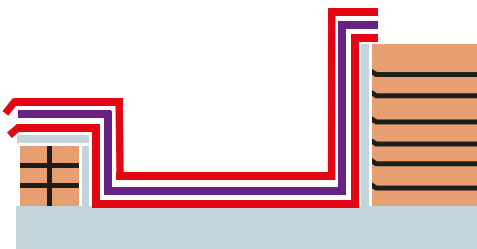
7 Roof

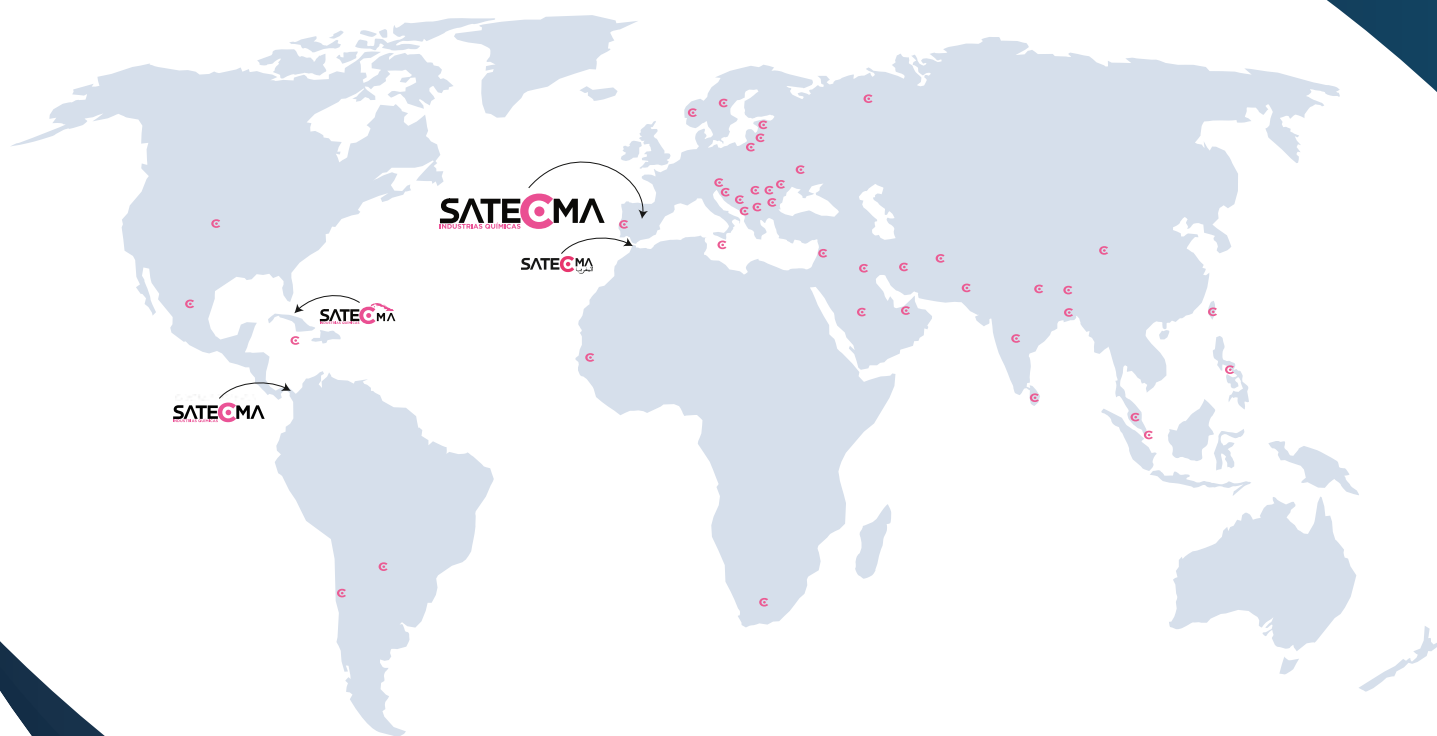


8 FACADES



TECMADRY ELAST  
REINFORCEMENT FIBER MESH





SINCE 1976  
SUCCESSFULLY PRESENT  
IN MORE THAN 60 COUNTRIES  
ALL AROUND THE WORLD

**SATECMA**  
INDUSTRIAS QUÍMICAS

c/ La Fundación, 69 - Pol. Ind. Santa Ana - Rivas Vaciamadrid - 28522 Madrid (Spain)  
Tel.: +34 91 666 47 11 - Fax: +34 91 666 43 11 - E-MAIL: [CORREO@SATECMA.ES](mailto:CORREO@SATECMA.ES) - [WWW.SATECMA.ES](http://WWW.SATECMA.ES)